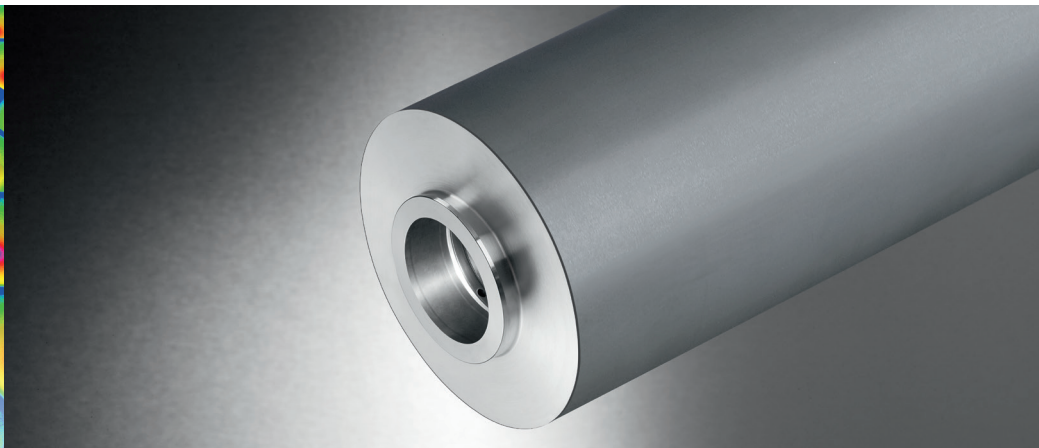
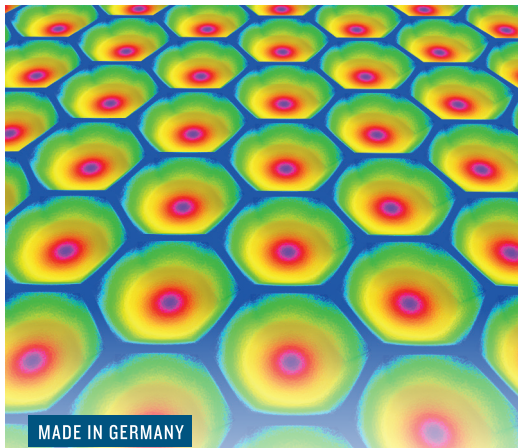


INOflex[®] INOlox[®] MAX Proline

INOlox[®] MAX anilox sleeves offer optimal ink release and are thus used for high-quality flexographic printing. High ink transfer, minimized number of required cleaning processes, as well as great process accuracy enable repeatable print results in the highest quality. INOMETA offers the whole range of services from a single source – from advice to finished anilox sleeves and the subsequent service.



DIMENSIONEN*

- Diameter of 150 mm - 300 mm
- Length of 1500 mm - 3000 mm

BASE CORE

- Aluminium

SURFACES

- Superior AS with hardness level > 1300 HV
- Rz < 2 before engraving
- Reduces surface and doctor blade wear with INOcell[®] polishing standard

CONCENTRIC ACCURACY

- 0.010 mm

INOcell[®] POLISHING STANDARD

- IF+ 60 - 70%

EXTENDED ENGRAVING RANGE

- Hexagonal 60° 40 - 700 L/cm
- Hexagonal 60° channel 60 - 420 L/cm
- Elongated 75° 60 - 440 L/cm
- Elongated 75° channel 60 - 440 L/cm
- Hatching 45° 45 - 320 L/cm
- Cross-hatching 45° 40 - 200 L/cm
- Special engravings

INOcell[®]+ VOLUME TOLERANCES

- up to 3 cm³m² /+ 4%
- 3-6 cm³m² /+ 5%
- ≥ 6 cm³m² /+ 6%

CORROSION PROTECTION

Corrosion barrier – excellent corrosion protection when using water-based and solvent-based printing inks, coatings and other media

CLEANING

- Machine cleaning: INOcare[®] BioClean 2000
- Manual cleaning: INOcare[®] Xtra & Xtra plus

THE ADVANTAGES OUR SERVICES CAN OFFER YOU

- High repetitive accuracy thanks to cutting-edge production facilities
- Excellent, coordinated corrosion protection for aluminium or steel components. Tested with a variety of media in a PH range between 5 and 14.
- Original equipment manufacturer quality
- Long service life thanks to optimized surface finishing after engraving

- Very good cleaning properties
- Precise printing results at high speeds

SERVICE

- New production
- Reworking
- Ultrasonic cleaning
- Volume measurement
- Service on site
- Belt testing

*Further dimensions on request

Last update: 01/2021

INOflex[®]

INOMETA offers a comprehensive portfolio of lightweight materials for use in the printing unit and other areas of flexographic printing machines. The product family INOflex[®], the system solution for flexographic printing. As a specialist for rotating printing unit components, INOMETA develops and produce components that are precisely coordinated such as anilox rollers or anilox sleeves, CFRP bridge adapters with hydraulic or pneumatic clamping systems and CFRP shafts. INOMETA is also the specialist in the production of web-guiding rolls and winding cores.