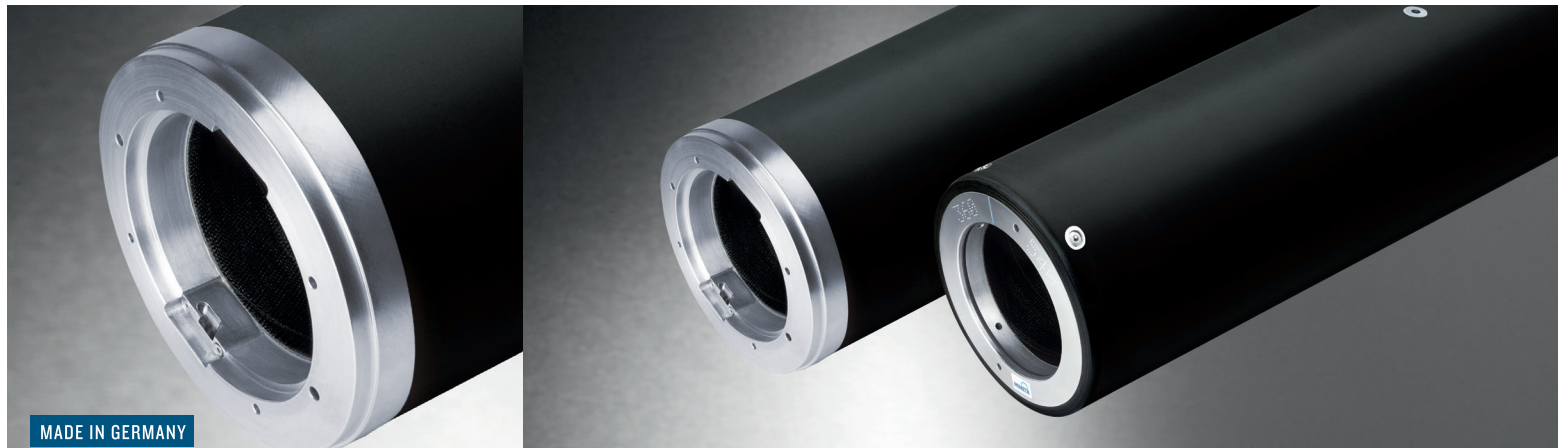


# INOflex<sup>®</sup> INObriidge<sup>®</sup> CP Proline

The new INObriidge<sup>®</sup> CP Proline pneumatic CFK adapters are the entry into the high-end range of the INOflex<sup>®</sup> pneumatic adapter family. The use of high-quality materials and a consistently matched CFRP laminate enable you to achieve high flexibility and stable printing processes. Achieving the optimum print speed with less waste is the outstanding feature of the Proline version.



## ASSEMBLY

- On pneumatic or hybrid shafts
- Min. 6 bar/max. 8 bar.
- Min. air volume 12 litres/sec.

## DIMENSIONS

- STORK
- 1/4 Pitch Gear/ 1/8 Pitch Gear
- IO Diametral Pitch Gear

## MINIMUM POSSIBLE FORMAT JUMPS

- IO format jumps (Ø 31,831 mm)

## RUN OUT

- 0,015 mm

## LENGTH\*

- Min. 650 mm
- Max. 1950 mm

## POSSIBLE OUTER FORMATS\*

- Min. outer
 

Stork:	390 (Ø 117,891 mm)
Pitch Gear:	15,375 (Ø 117,958 mm)
- Max. outer
 

Stork:	1400 (Ø 439,134 mm)
Pitch Gear:	55 (Ø 438,329 mm)

## POSSIBLE INNER FORMATS\*

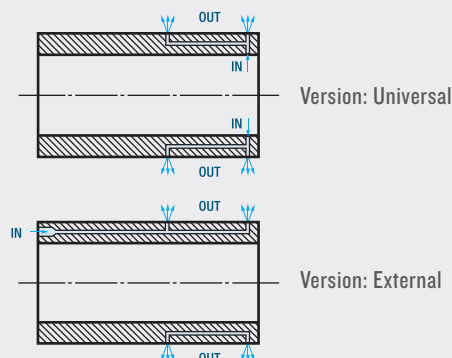
- Min. inner
 

Stork:	290 (Ø 86,060 mm)
--------	-------------------
- Max. inner
 

Stork:	500 (Ø 152,905 mm)
--------	--------------------

## AIR SUPPLY SYSTEM

- Supported systems: Air hole system or ball valves
- Universal: Air supply via a cylinder at the operator side including INOflex<sup>®</sup> seal
- External: Air supply via face side adapter at the drive side



\*Further dimensions on request

Last update: 01/2024

# INOflex<sup>®</sup> INObriidge<sup>®</sup> CP Proline

## DIAMETER TOLERANCES

- ≤ Format 700 (Ø 216,567 mm)  
+0,015 mm / +0,000
- Optional +0,030 mm / +0,000
- >Format 700 (Ø 216,567 mm)  
+0,018 mm / +0,000
- Optional +0,035 mm / +0,000

## COATING

- Electrically conductive in accordance with ATEX 2014/34/EU
- Wear resistant PROTEK<sup>®</sup> 3340 (Hardness 90 Shore D)
- Optional stain-resistant surface sealing PROTEK<sup>®</sup> 9003
- Rz 4-10 µm

## INSERT MATERIAL

- Aluminium

## AIR SUPPLY (OPERATER SIDE/ROLLER BODY)

- Drilling
- Optional plastic inserts
- Optional ball valves

## INOFLEX<sup>®</sup> REGISTRATION

- INOlock (Bajonett) or INOslot (registration systems) steel incl. opposite replacement registration
- INOpin steel reinforced
- See data sheet for specifications INOflex<sup>®</sup> registration

## CHARACTERISTIC AT A GLANCE

- Innovative design
- Bridge system – Minimized points of contact between adapter and air cylinder
- Integrated INOflex<sup>®</sup> seal for user-friendly assembly – No escaping air between air cylinder and adapter
- Integrated damping system to reduce vibrations to a minimum
- Highest register accuracy
- Perfect register accuracy
- Registration optionally replaceable, replacement integrated
- Low weight for simple handling due to the use of lightweight materials

## INOflex<sup>®</sup>

INOMETA offers a comprehensive portfolio of lightweight materials for use in the printing unit and other areas of flexographic printing machines. The product family INOflex<sup>®</sup>, the system solution for flexographic printing. As a specialist for rotating printing unit components, INOMETA develops and produce components that are precisely coordinated such as anilox rollers or anilox sleeves, CFRP bridge adapters with hydraulic or pneumatic clamping systems and CFRP shafts. INOMETA is also the specialist in the production of web-guiding rolls and winding cores.