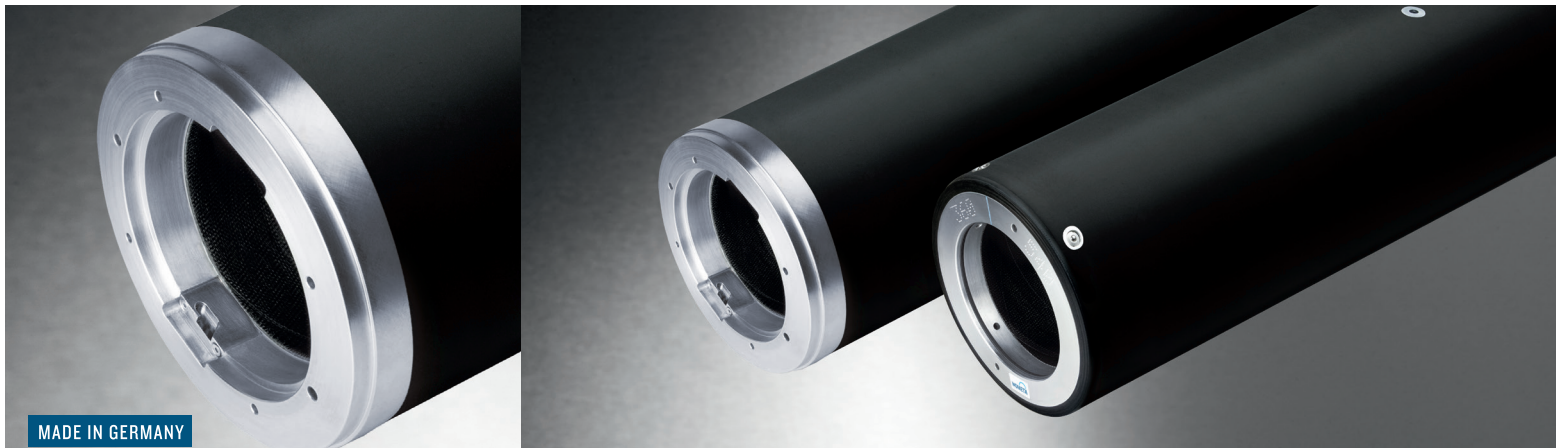


INOflex[®] INObriidge[®] CP ProXline

The new INObriidge[®] CP ProXline pneumatic CFK adapters are the pinnacle of the INOflex[®] pneumatic adapter family. Optimized for every working width and format, individually calculated CFRP laminates and high-quality materials are used to ensure maximum product rigidity and reliably, preventing vibrations to Print images with the most demanding requirements. The new INObriidge[®] CP ProXline pneumatic adapters are your solution for the highest demands and the full utilization of your machine performance.



MADE IN GERMANY

ASSEMBLY

- On pneumatic or hybrid shafts
- Min. 6 bar/max. 8 bar.
- Min. air volume 12 litres/sec.

DIMENSIONS

- STORK
- 1/4 Pitch Gear/ 1/8 Pitch Gear
- IO Diametral Pitch Gear

MINIMUM POSSIBLE FORMAT JUMPS

- 10 format jumps (Ø 31,831 mm)

RUN OUT

- 0,015 mm

LENGTH*

- Min. 650 mm
- Max. 1950 mm

POSSIBLE OUTER FORMATS*

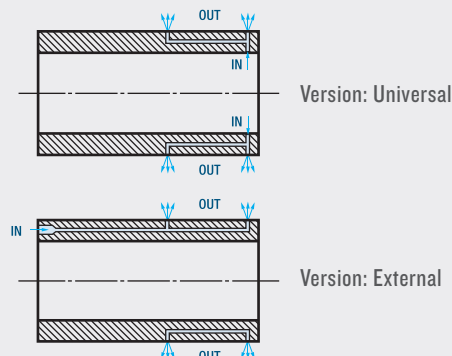
- Min. outer
Stork: 390 (Ø 117,891 mm)
Pitch Gear: 15,375 (Ø 117,958 mm)
- Max. outer
Stork: 1400 (Ø 439,134 mm)
Pitch Gear: 55 (Ø 438,329 mm)

POSSIBLE INNER FORMATS*

- Min. inner
Stork: 290 (Ø 86,060 mm)
- Max. inner
Stork: 500 (Ø 152,905 mm)

AIR SUPPLY SYSTEM

- Supported systems: Air hole system or ball valves
- Universal: Air supply via a cylinder at the operator side including INOflex[®] seal
- External: Air supply via face side adapter at the drive side



*Further dimensions on request

Last update: 01/2024

INOflex[®] INObriidge[®] CP ProXline

DIAMETER TOLERANCES

- ≤ Format 700 (Ø 216,567 mm)
+0,015 mm / +0,000
- >Format 700 (Ø 216,567 mm)
+0,018 mm / +0,000

COATING

- Electrically conductive in accordance with ATEX 2014/34/EU
- Wear resistant PROTEK[®] 3340 (Hardness 90 Shore D)
- Included stain-resistant surface sealing PROTEK[®] 9003
- Rz 4-10 µm

INSERT MATERIAL

- Aluminium

AIR SUPPLY (OPERATER SIDE/ROLLER BODY)

- OS: plastic insert / Rollerbody: drilling
- Optional plastic inserts
- Optional ball valves

INOFLEX[®] REGISTRATION

- INOlock (Bajonett) or INOslot (registration systems) steel incl. opposite replacement registration
- INOpin steel reinforced
- See data sheet for specifications INOflex[®] registration

CHARACTERISTIC AT A GLANCE

- Highest stiffness against deformation due to optimal CFRP laminate design
- Bridge system – Minimized points of contact between adapter and air cylinder
- Integrated INOflex[®] seal for user-friendly assembly – No escaping air between air cylinder and adapter
- Integrated damping system to reduce vibrations to a minimum
- Perfect register accuracy
- Registration optionally replaceable, replacement integrated
- Low weight for simple handling

INOflex[®]

INOMETA offers a comprehensive portfolio of lightweight materials for use in the printing unit and other areas of flexographic printing machines. The product family INOflex[®], the system solution for flexographic printing. As a specialist for rotating printing unit components, INOMETA develops and produce components that are precisely coordinated such as anilox rollers or anilox sleeves, CFRP bridge adapters with hydraulic or pneumatic clamping systems and CFRP shafts. INOMETA is also the specialist in the production of web-guiding rolls and winding cores.