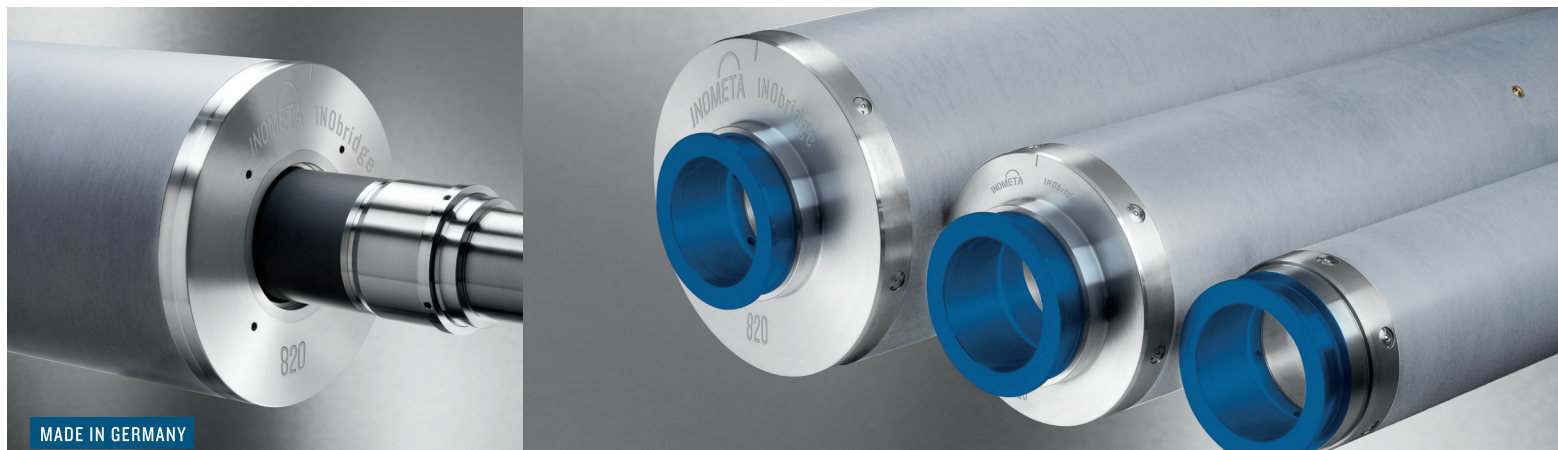


# INOflex<sup>®</sup> INObriDge<sup>®</sup> CH Ecoline

The hydraulically clamped CFRP bridge adapter with a CFRP outer tube and wear resistant PROTEK<sup>®</sup> coating takes account of top-notch manufacturer quality your flexographic printing machine. The CFRP base core is characterised by optimised rigidity and a high level of coupling stiffness, which guarantees high speeds and a superior print quality. Thanks to its excellent handling, the on/off sleeving process is considerably alleviated and set-up times are optimised.



MADE IN GERMANY

## ASSEMBLY

- On hydraulic shafts
- Min. 6 bar/ max. 8 bar compressed air
- Min. air volume: 12 litres/sec.

## MINIMUM POSSIBLE FORMAT JUMPS

- 10 format jumps as standard

## POSSIBLE CLAMPING POINTS DIAMETERS

- Min. 85 mm
- Max. 245 mm

## LENGTH\*

- Min. 650 mm
- Max. 2000 mm
- From 2000 mm, refer to INObriDge<sup>®</sup> MAX range

## DIAMETER TOLERANCES

- ≤ Format 700 (Ø 216,567 mm) +0,015 mm / +0,000
- Optional: +0,030 mm / +0,000
- > Format 700 (Ø 216,567 mm) +0,018 mm / +0,000
- Optional: +0,035 mm / +0,000

## POSSIBLE OUTER FORMATS\*

- Min. outer
 

Stork:	350 (Ø 105,158 mm)
Pitch Gear:	13,875 (Ø 105,830 mm)
- Max. outer
 

Stork:	1400 (Ø 439,134 mm)
Pitch Gear:	55.125 (Ø 439,340 mm)
- From 1400 Stork (Ø 439,134 mm), refer to INObriDge<sup>®</sup> MAX range

## PULL RING

- Aluminium (blue anodized)

## CHARACTERISTICS AT A GLANCE

- Weight reduction with high level of rigidity
- Enhanced damping properties and reduction of vibrations
- Easier handling thanks to its light weight
- The stable hydraulic clamping minimises the points of contact between the adapter and shaft.
- The adapter design is based on the bridge principle, which enables a significantly shorter force transmission to the shaft. In conjunction with the optimised CFRP laminate structure, this provides the minimal degree of total deformation.

\*Further dimensions on request

Last updated: 01/2024

# INOflex<sup>®</sup> INObriidge<sup>®</sup> CH Ecoline

## COATING

- Electrically conductive in accordance with ATEX 2014/34/EU
- Wear resistant PROTEK<sup>®</sup> 3340 (Hardness 90 Shore D)
- Rz 8-16µm

## TEMPERATURES

- Areas of application up to 60° C

## SERVICE

In addition to the new production in original equipment manufacturer quality, INOMETA offers an overhauling and repair service for your used hydraulic CFRP bridge adapters.

## INSERT MATERIAL

- Aluminium/steel
- Choice of material is dependent on the format

## BUSHING/HUB MATERIAL

- Steel unhardened

## AIR OUTLET (OPERATOR SIDE/ROLLER BODY)

- Boring
- Drilled plastic insert

## RUN OUT

- 0,015 mm

## INOFLEX<sup>®</sup> REGISTRATION

- INOpin steel
- Optional stop angle

## CLEANING

- For cleaning, we recommend BioClean 2000 from our INOcare<sup>®</sup> range
- Resistant against conventional solvents used in flexographic printing
- Also observe our operating and cleaning instructions

## INOflex<sup>®</sup>

With our INOflex<sup>®</sup> product range – a comprehensive solution for flexographic printing – INOMETA offers a full portfolio of lightweight products for use in printing units and other areas of flexographic printing machines. As a specialist in rotating printing unit components, INOMETA develops and produces components that are designed to work perfectly together, including anilox rollers and anilox sleeves, CFRP bridge adapters with hydraulic or pneumatic clamping systems and CFRP shafts. INOMETA is also the leading specialist of web-guiding rollers and winding cores.